

Commercial Tapware

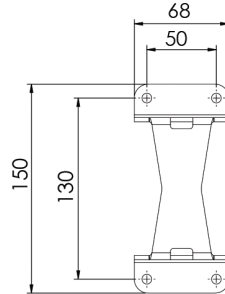


Hot Wash Reel & Trigger Valve

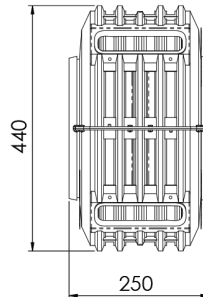
T-TWHWR1215SG

T-TWHWR1215

- Reel hose is 12mm internal diameter x 15m length
- Reel has ½" FI BSP Inlet
- Reel has ½" MI BSP Outlet
- Trigger valve has ½" FI BSP Inlet
- Maximum Working pressure 550kPa
- Maximum operating temperature 85 degrees



T-TWHWR1215
(Hot Wash Reel)



T-TWSGV65SVL
(Trigger Valve)

