

# ACQUAline

## Model AQD1200 Installation, Warranty and Parts List

### Deck Mounted Pre Rinse

Congratulations on purchasing this quality Acqualine Tapware.

This product is manufactured to the highest standards under strict quality control procedures.



Minimum Pressure: 150kpa

Maximum Pressure: 500kpa, optimum working pressure is 350kpa

Minimum Temperature: 10deg Maximum Temperature: 80deg

### Installation Procedure

This Commercial high-end Pre Rinse Unit is partially factory assembled and designed for easy installation and maintenance.

#### Please follow these instructions:

1. Place the base "O" ring on the underside of the base ring. Screw on the flexible hoses (2) firmly into the mixer.
2. Screw in the fixing bolt/s and tighten with a screwdriver.
3. Place the mixer unit in the pre-drilled hole in the sink or basin, with the flexible hoses going in first.
4. From underneath the sink or basin, fix rubber seal, fixing plate and fixing nut/s in the respective order.
5. Tighten the fixing nut/s with socket set or tubspanner to clamp the mixer onto the sink. Ensure the Pre Rinse unit is firmly attached to the sink or basin.
6. Flush the two pipelines to clear any foreign matter. Connect the Pre Rinse Unit to the water supply line by connecting the two flexible connectors to the isolating stop valves.
7. After full connection to water supply, remove the aerator before initial water testing.

#### IMPORTANT NOTE:

We do not recommend dismantling the internal parts of the Pre Rinse Unit. The units are individually factory assembled and tested to give the best performance and reliability.

#### NOTE:

THIS PRE RINSE UNIT CAN ONLY BE USED ON MAINS PRESSURE.

### Product Warranty / Servicing

Your Pre Rinse Unit comes with our exclusive 13 month warranty from the date of purchase.

Please retain your invoice as proof of purchase.

We reserve the right to repair or replace the unit under the Standard Terms of our Warranty. This Warranty provides for on-site warranty service, covering parts and labour, during our normal working hours Monday to Friday.

#### Please note these important conditions of warranty:

- The warranty is extended to the original purchaser only and is not transferable.
- All Pre Rinse Units should be installed with isolating stopvalves.
- Use only suitable agents to clean the surface of your mixer ( No abrasive cleaners )
- The mixer must be installed by a licensed plumber.

**All new connections must be flushed prior to the connection.** If the incoming water pressure exceeds 500KPa, an approved limiting valve **must** be fitted.

- Operating temperature is not to exceed 80° C
- Water Saving Devices maybe required.
- Minimum Operating Pressure 150KPa.

FOR AFTER SALES SERVICE, PLEASE CONTACT FSM

**FSM**

Excellence since 1976

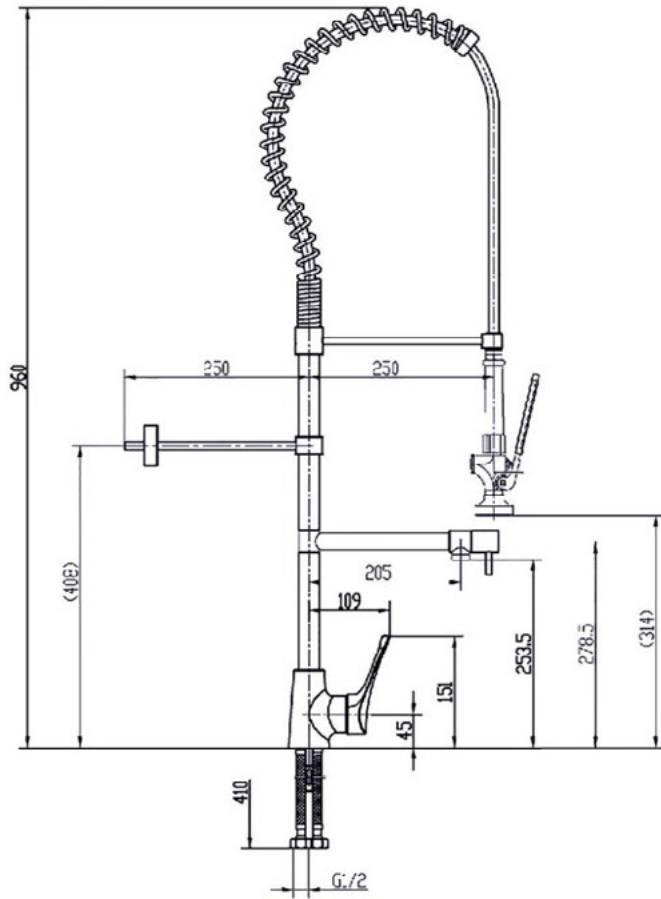
**(03) 9368 2300**

or go to our website at:

[www.fsm-pl.com.au](http://www.fsm-pl.com.au)

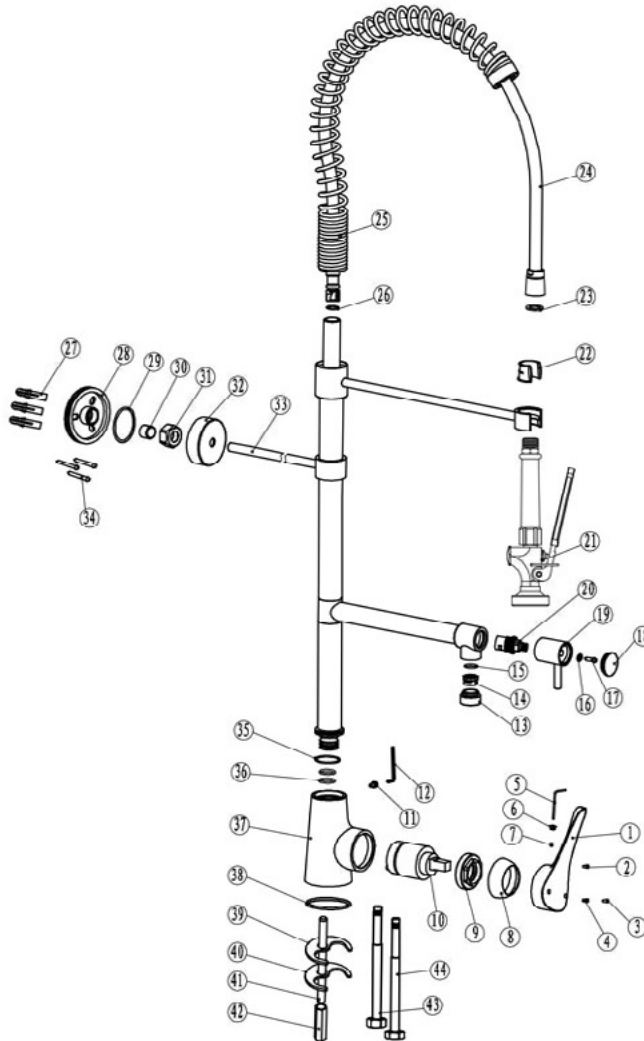
and lodge an on-line service/warranty request

### DIMENSIONS



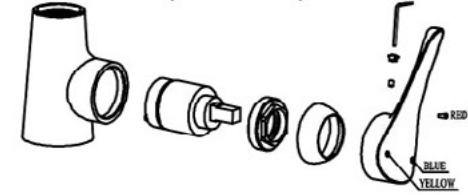
CUTOUT SIZE 32mm

### PARTS BREAK UP

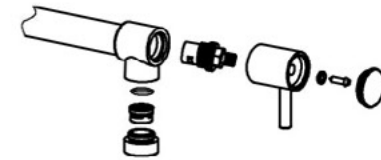


### MIXER / BODY ASSEMBLY

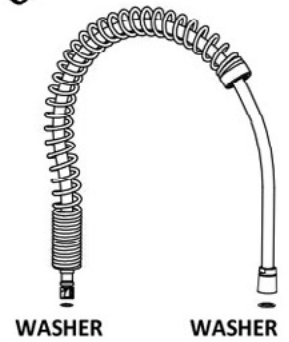
1. Mixer body assembly



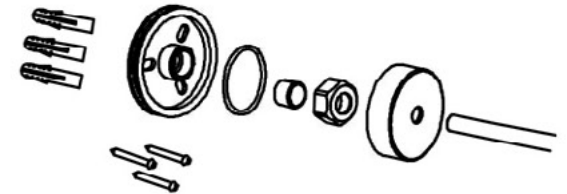
2. Pot filler assembly



3. Hose assembly



4. Wall bracket



### Standards/ compliance:

Tested and approved to AS/NZS3718, AS4020 and AS/NZS6400.