

Sinks & Basins

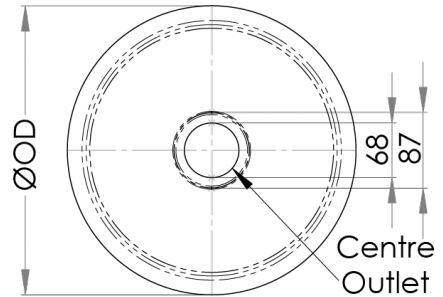


Round Pressed Sink Bowls

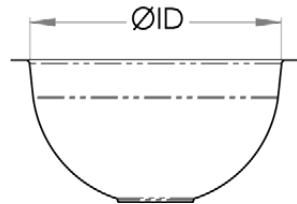


- Constructed from 1mm 304 grade stainless steel
- 20mm flange
- 50mm centre outlet - suits 50mm plug and waste or 50mm Scraptrap
- Mirror polish finish

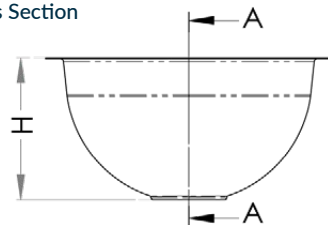
Top



Front



Cross Section



PRODUCT CODE	W (mm)	D (mm)	H (mm)	OUTLET	CAPACITY
RB300	340	300	165	50	8.3L
RB385	425	385	165	50	10.3L